

HAVEN COURT

HAVEN AVENUE & TOWN CENTER DRIVE, RANCHO CUCAMONGA, CA



PROJECT FEATURES

- +CVS Anchored 24,000 sf mixed use center
- +Adjacent to Terra Vista Town Center, a regionally-prominent power center anchored by Target, Ross, HomeGoods, Michaels, Old Navy, L.A. Fitness & Big 5 Sporting Goods
- +Strong daytime population of an estimated 72,144 employees in a 3-mile radius
- +Part of 1,320-acre master planned community of Terra Vista, with a projected build-out of 8,000 households

DEMOGRAPHICS

Radius	1-Miles	3-Miles
Estimated Population	25,215	147,566
Estimated Avg. HH Income	\$84,554	\$88,555

TRAFFIC COUNT

Haven Ave. 30,263 cars/day

Source: City of Rancho Cucamonga 2007



1800flowers® CONBOYS

FIVE GUYS
BURGERS and FRIES

Fantastic Sams

LEWIS RETAIL CENTERS

Lic. 1252241

T. 909-946-7518

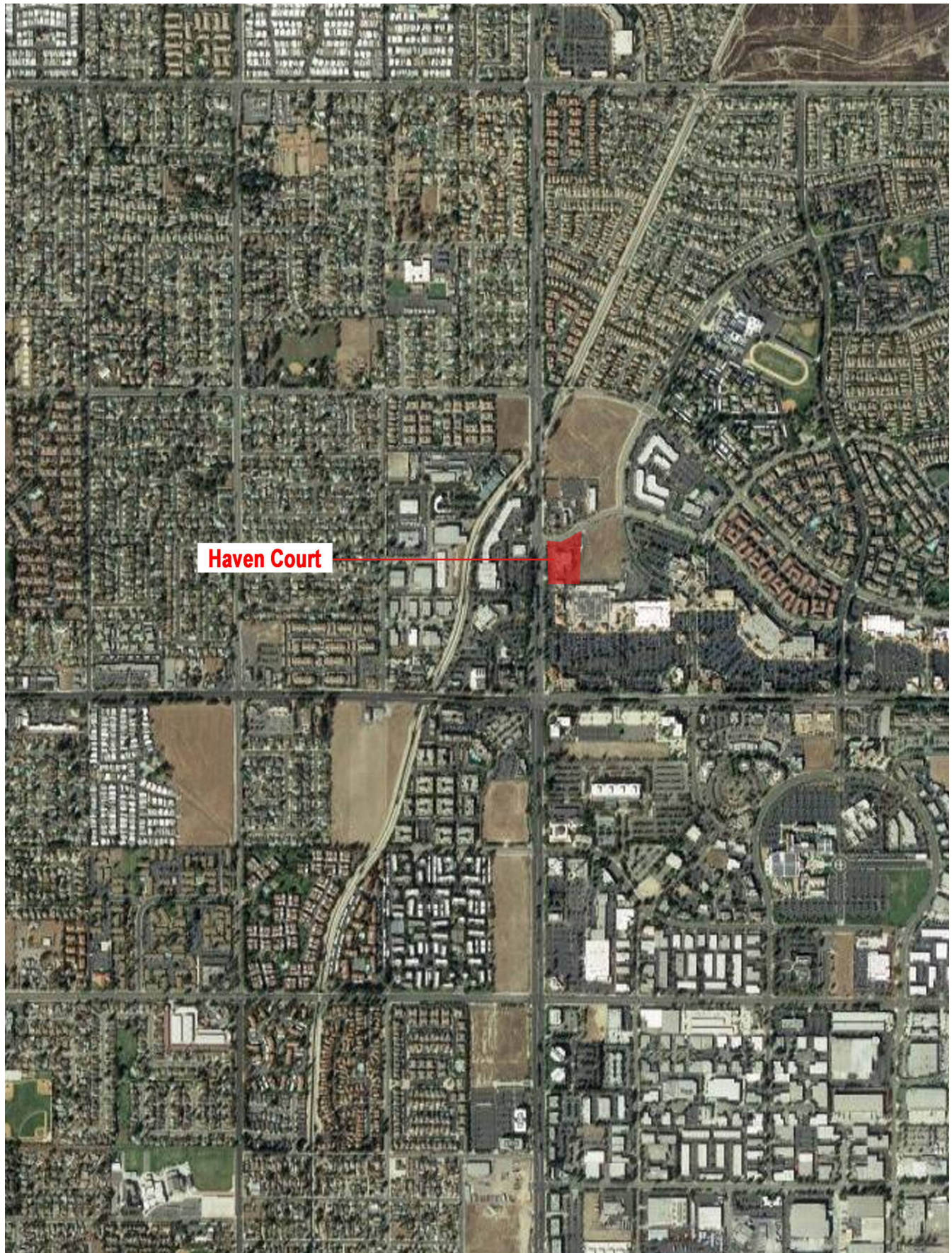
retailinfo@lewismc.com

Lewis Retail Centers

Offered by Lewis Management Corp., a licensed real estate broker, DRE License 01994759. This information has been obtained from sources believed reliable. We have not verified it and make no guarantee, warranty or representation about it. Any projections, opinions, assumptions or estimates used are for example only and do not represent the current or future performance of the property. You and your property advisors should conduct a careful, independent investigation of the property to determine to your satisfaction the suitability of the property for your needs.

HAVEN COURT

HAVEN AVENUE & TOWN CENTER DRIVE, RANCHO CUCAMONGA, CA

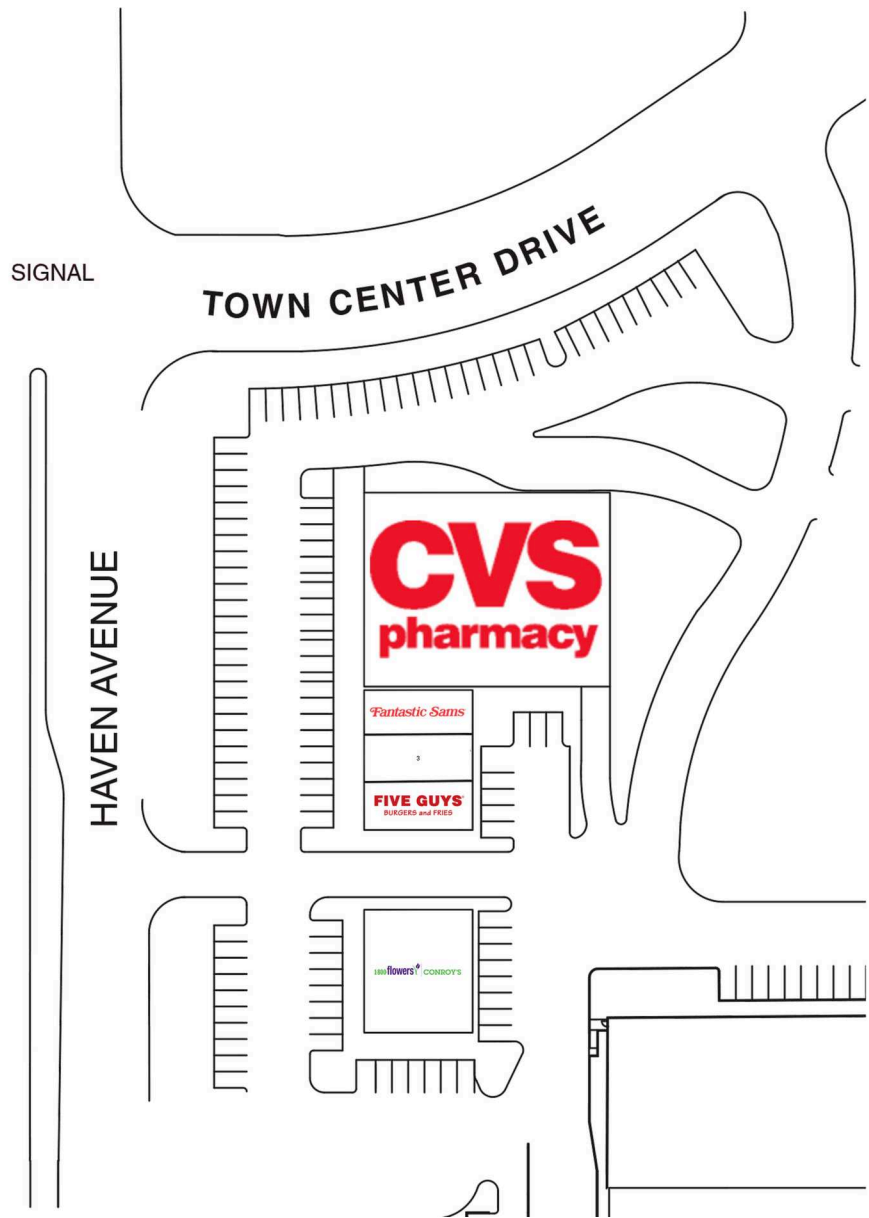


Lewis Retail Centers

HAVEN COURT

HAVEN AVENUE & TOWN CENTER DRIVE, RANCHO CUCAMONGA, CA

TENANT		SQFT
1	CVS	14,841
2	Fantastic Sam's	1,000
3	Summit Orthodontics	2,040
4	Five Guys Burger & Fries	2,400
5	Conroy's Florist	3,600



LEWIS RETAIL CENTERS
Lic. 1252241
T. 909-946-7518
retailinfo@lewismc.com

Offered by Lewis Management Corp., a licensed real estate broker, DRE License 01994759. This information has been obtained from sources believed reliable. We have not verified it and make no guarantee, warranty or representation about it. Any projections, opinions, assumptions or estimates used are for example only and do not represent the current or future performance of the property. You and your property advisors should conduct a careful, independent investigation of the property to determine to your satisfaction the suitability of the property for your needs.

Lewis Retail Centers

SUMMARY PROFILE

2000-2010 Census, 2016 Estimates with 2021 Projections

Calculated using Weighted Block Centroid from Block Groups

Lat/Lon: 34.1104/-117.5758

RS1

Haven Court			
Rancho Cucamonga, CA 91730			
		1 mi radius	3 mi radius
POPULATION	2016 Estimated Population	25,215	147,566
	2021 Projected Population	26,037	152,676
	2010 Census Population	23,214	138,546
	2000 Census Population	17,345	111,103
	Projected Annual Growth 2016 to 2021	0.7%	0.7%
	Historical Annual Growth 2000 to 2016	2.8%	2.1%
	2016 Median Age	32.2	34.5
HOUSEHOLDS	2016 Estimated Households	9,461	51,784
	2021 Projected Households	9,805	53,793
	2010 Census Households	8,570	47,778
	2000 Census Households	6,213	36,826
	Projected Annual Growth 2016 to 2021	0.7%	0.8%
	Historical Annual Growth 2000 to 2016	3.3%	2.5%
RACE AND ETHNICITY	2016 Estimated White	53.9%	56.5%
	2016 Estimated Black or African American	13.3%	10.4%
	2016 Estimated Asian or Pacific Islander	11.2%	11.7%
	2016 Estimated American Indian or Native Alaskan	0.8%	0.7%
	2016 Estimated Other Races	20.9%	20.7%
	2016 Estimated Hispanic	39.9%	40.5%
INCOME	2016 Estimated Average Household Income	\$84,554	\$88,555
	2016 Estimated Median Household Income	\$73,193	\$75,233
	2016 Estimated Per Capita Income	\$31,736	\$31,090
EDUCATION (AGE 25+)	2016 Estimated Elementary (Grade Level 0 to 8)	4.2%	4.4%
	2016 Estimated Some High School (Grade Level 9 to 11)	5.2%	5.2%
	2016 Estimated High School Graduate	20.4%	21.6%
	2016 Estimated Some College	29.2%	28.7%
	2016 Estimated Associates Degree Only	8.6%	10.0%
	2016 Estimated Bachelors Degree Only	21.5%	19.2%
	2016 Estimated Graduate Degree	10.9%	10.8%
BUSINESS	2016 Estimated Total Businesses	1,610	7,213
	2016 Estimated Total Employees	17,127	74,423
	2016 Estimated Employee Population per Business	10.6	10.3
	2016 Estimated Residential Population per Business	15.7	20.5

This report was produced using data from private and government sources deemed to be reliable. The information herein is provided without representation or warranty.